

Relentless Efficiency Scale Removal, Prevention & Control for Water Systems

Innovative Scale Control Technology for Heat Exchangers, Boilers, Condensers, HVAC Systems, Humidifiers, etc.

Scale Buildup Costs Money*

Scale Thickness	Fuel wasted	Money wasted
1/8"	+25%	\$23,497
1/4"	+40%	\$37,569
1/2"	+70%	\$65,794

**Cut Hot Water
Operating Costs
by 20-30%**

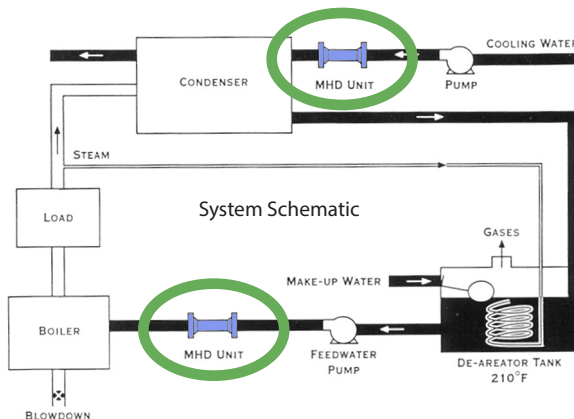
Millions of dollars in extra fuel costs are wasted due to mineral scale buildup.

* Annual extra fuel costs, based on a 200 HP boiler, operating 10 hours per day, 260 days per year; Natural Gas price based on \$4.30 per 1000 cubic feet (MMBTU).

A Better Alternative To Chemical Treatment

MHD units are self-powered by a permanent magnetic field treating the fluid to prevent scale buildup and remove existing scale downstream.

These rock-hard deposits increase fuel costs, repair and maintenance expenses and equipment downtime. Excessive scale buildup can increase the possibility of pipe ruptures, equipment failure and even explosions.



Magnetohydrodynamics is a well established science, initially demonstrated in 1839 by Michael Faraday.

- Prevents Scale Build-up
- Removes Existing Scale
- No Use of Hazardous Chemicals
- Provides Higher Heat Transfer Capacity

- No Moving Parts
- No Operating Costs
- Save Energy Costs
- Eliminate Pollution
- Self-Contained Units
- Improve Efficiency
- No Maintenance
- No Electrical Connections

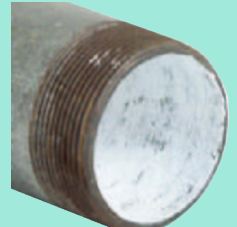
MHD Light Commercial



MagnetoHydroDynamic Units



Before



After



Before



90 Days After

www.mhdsystems.com

Relentless Efficiency

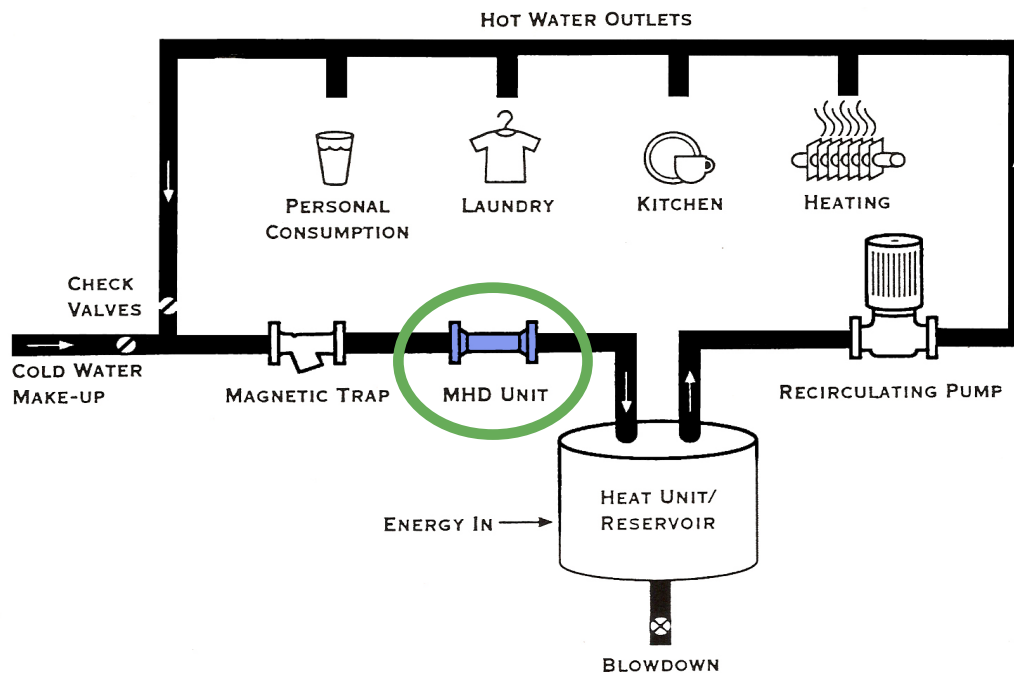
Scale Removal, Prevention & Control for Energy Savings and Longer Life

Extra Fuel Costs Due to Boiler Scale

Test Results by U.S. Bureau of Standards

Boiler Horsepower:		100 HP	200 HP
Annual Fuel Cost, Clean Boiler (80% efficient)		\$46,995	\$93,991
Scale Thickness	% Extra Fuel Cost	Extra Cost:	Extra Cost:
1/8"	+ 25%	\$11,747	\$23,497
1/4"	+ 40%	\$18,798	\$37,596
1/2"	+ 70%	\$32,896	\$65,794

Annual extra fuel costs are based on a boiler operating 10 hours per day, 260 days per year.
Natural Gas price is based on \$4.30 per 1000 cubic feet (MMBTU).



Sizes and Models of Light Commercial MHD Units:

Model	Diameter (inches)	Flow Rate (USGPM)	Model	Diameter (inches)	Flow Rate (USGPM)
LC-3	0.50"	3	LC-36	1.50"	36
LC-6	0.50"	6	LC-50	2.00"	50
LC-9	0.75"	9	LC-75	2.50"	75
LC-12	0.75"	12	LC-100	3.00"	100
LC-18	1.00"	18	LC-200	4.00"	200
LC-27	1.25"	27			

Models are 304 stainless steel, with standard 150 lb. NPT connections